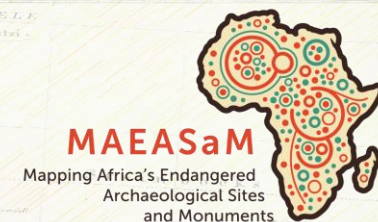




ARCADIA  
A CHARITABLE FUND OF  
LIBBET RAUSING & PETER BALDWIN

Die  
SÜDSPITZE VON AFRIKA  
mit der  
Colonie am Vorgebirge der guten Hoffnung  
und dem

Nach R. WEILANDS Entwurf  
verarbeitet von  
W. Kipert  
Weimar  
im Verlage des vormaligen Instituts



# Mapping Africa's Endangered Archaeological Sites and Monuments : The use of historical maps in locating heritage site in Africa

Renier van der Merwe

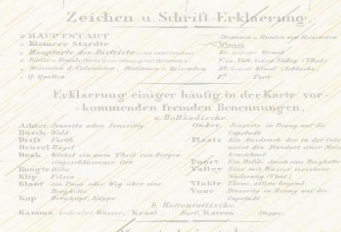
UNIVERSITY OF THE  
WITWATERSRAND,  
JOHANNESBURG



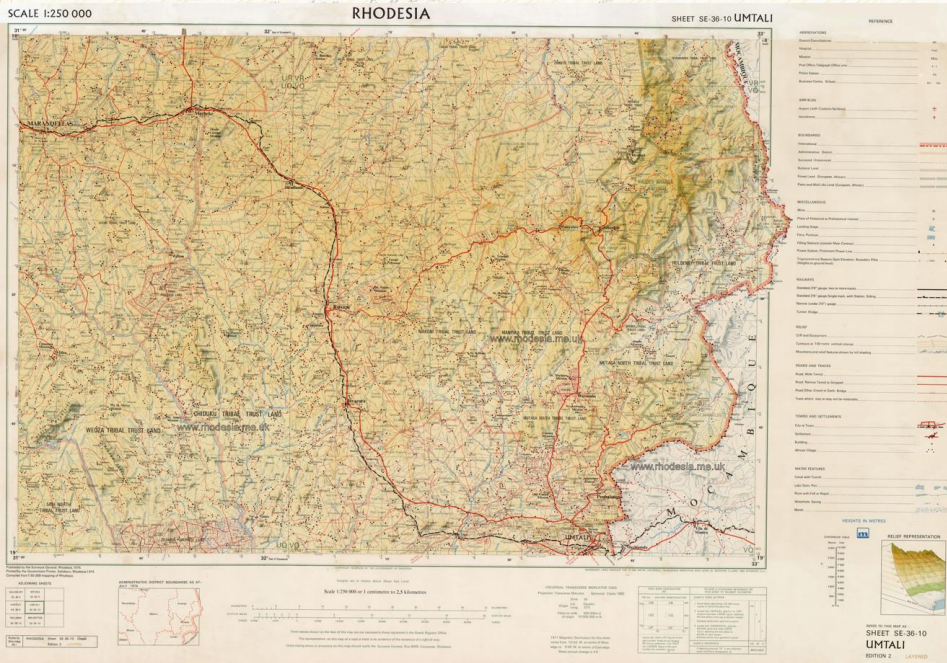
origins centre



UNIVERSITY OF  
CAMBRIDGE

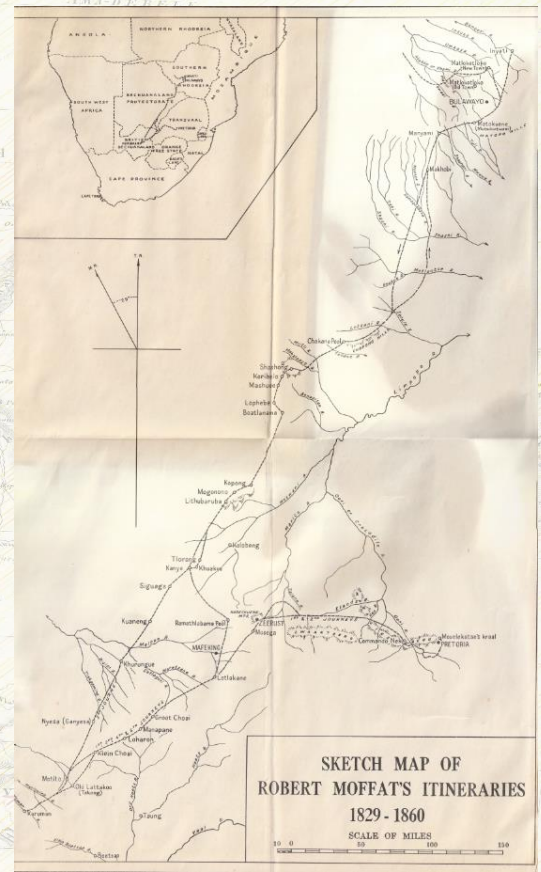






# Types of historical maps

Topographic maps  
(<https://www.rhodesia.me.uk/maps/>)



First-hand accounts  
(Wallis, J.P.R. ed. 1945. *The Matabele journals of Robert Moffat, 1829-1860, Vol1.* Chatto & Windus:London)



Regional historical maps  
(David Rumsey Collection)





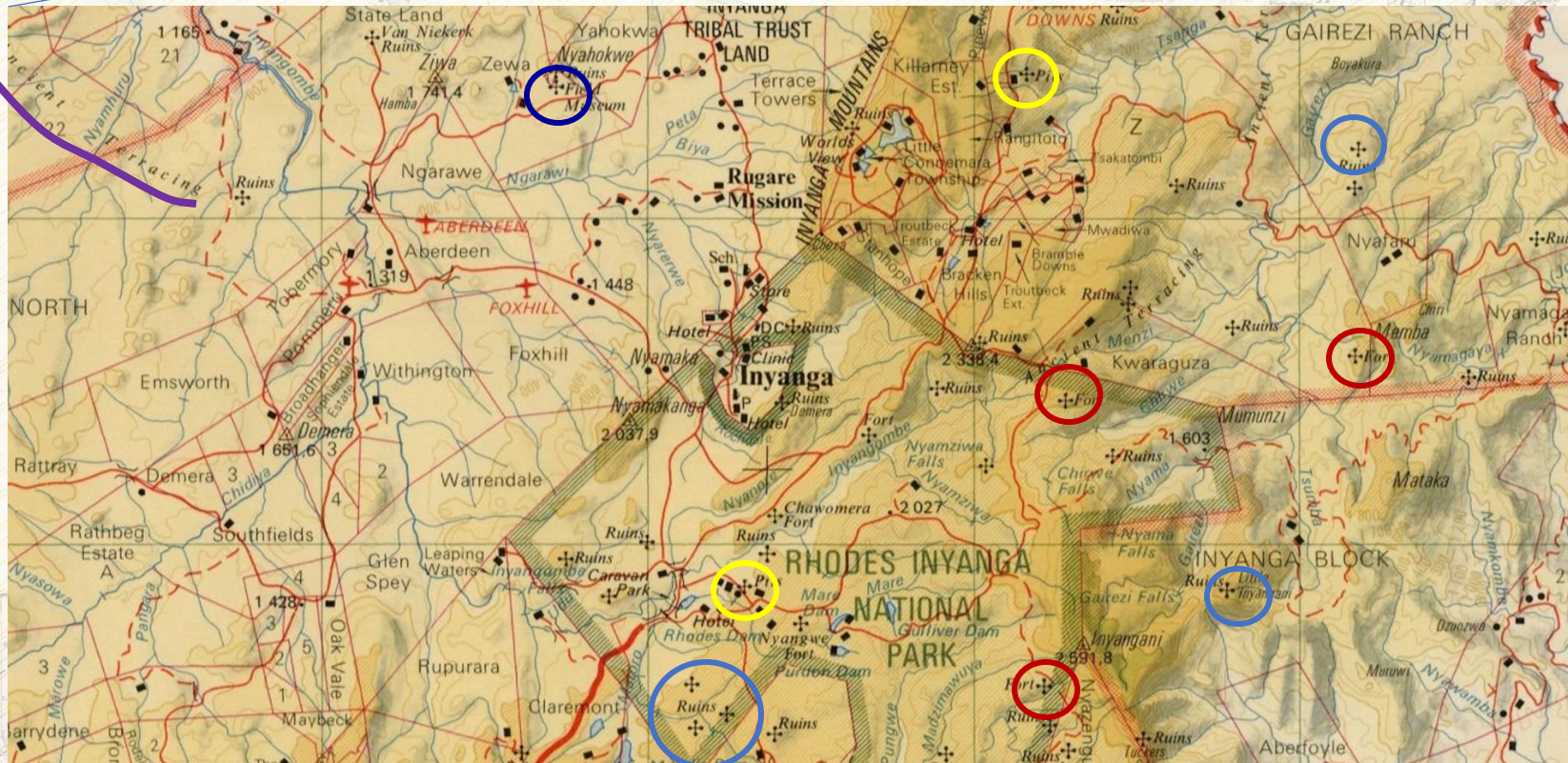




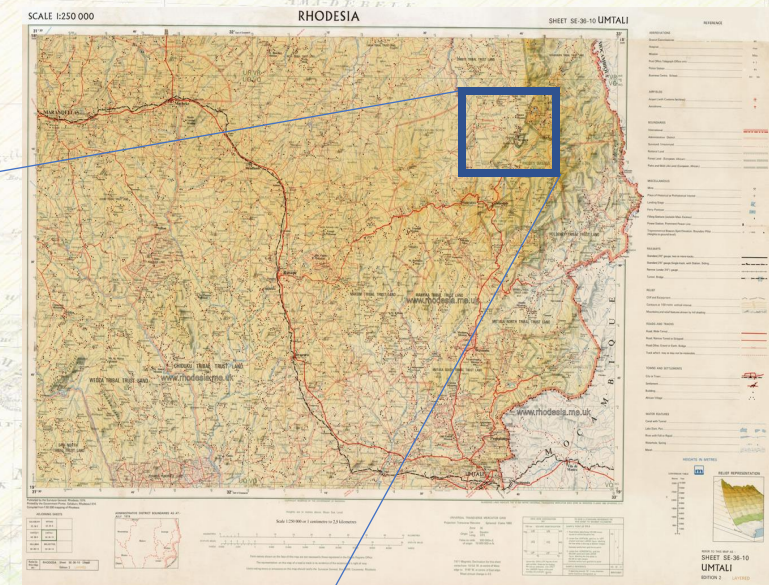




# Topographic maps: 1: 250 000

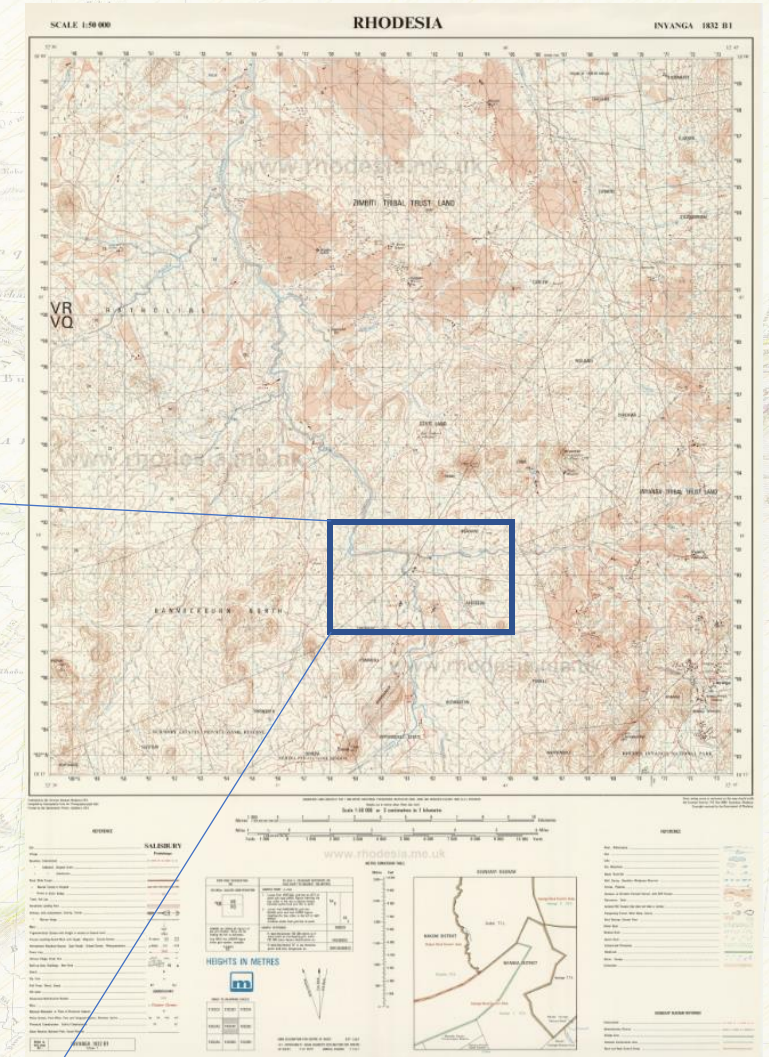
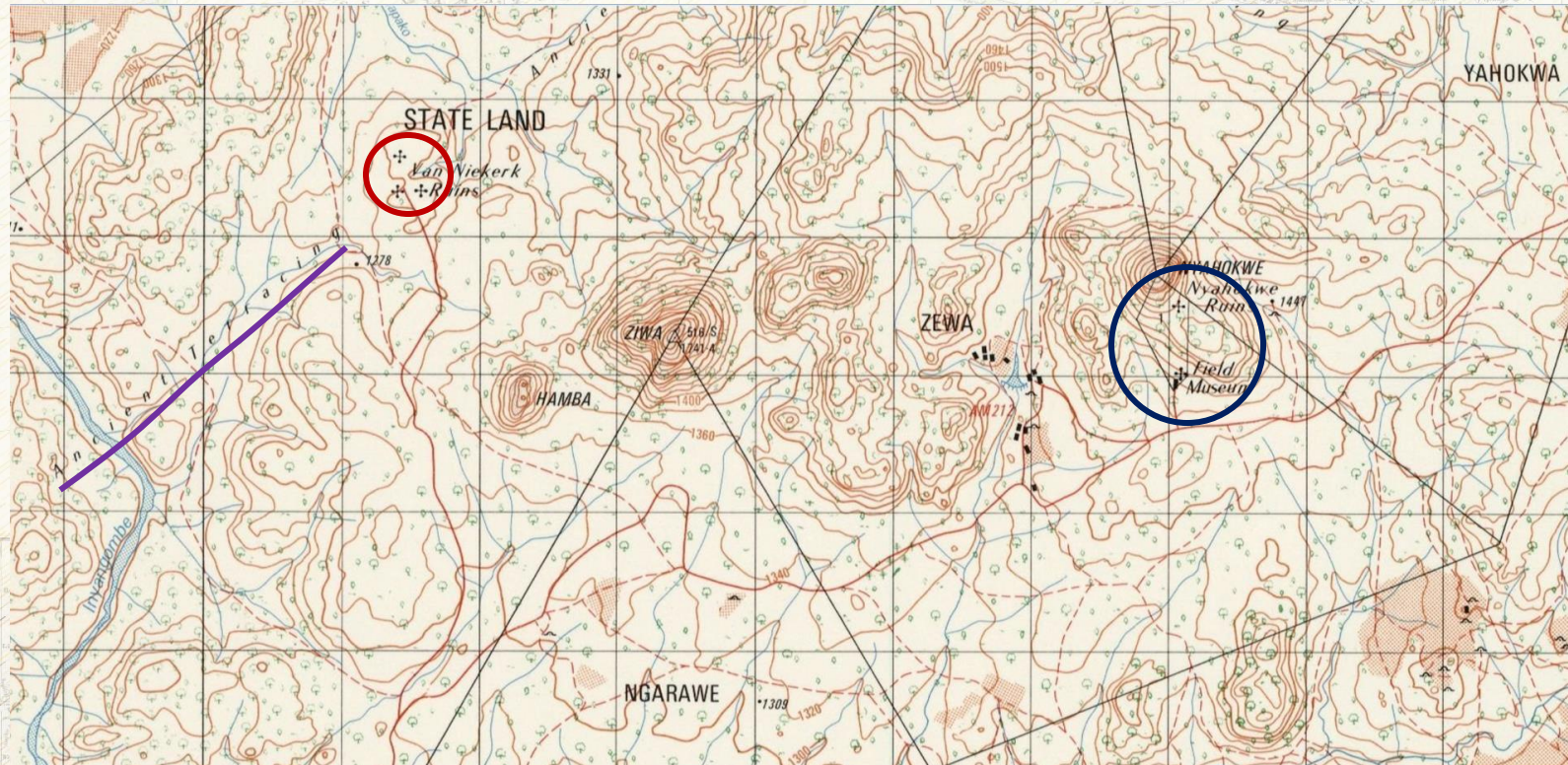


<https://www.rhodesia.me.uk/maps>





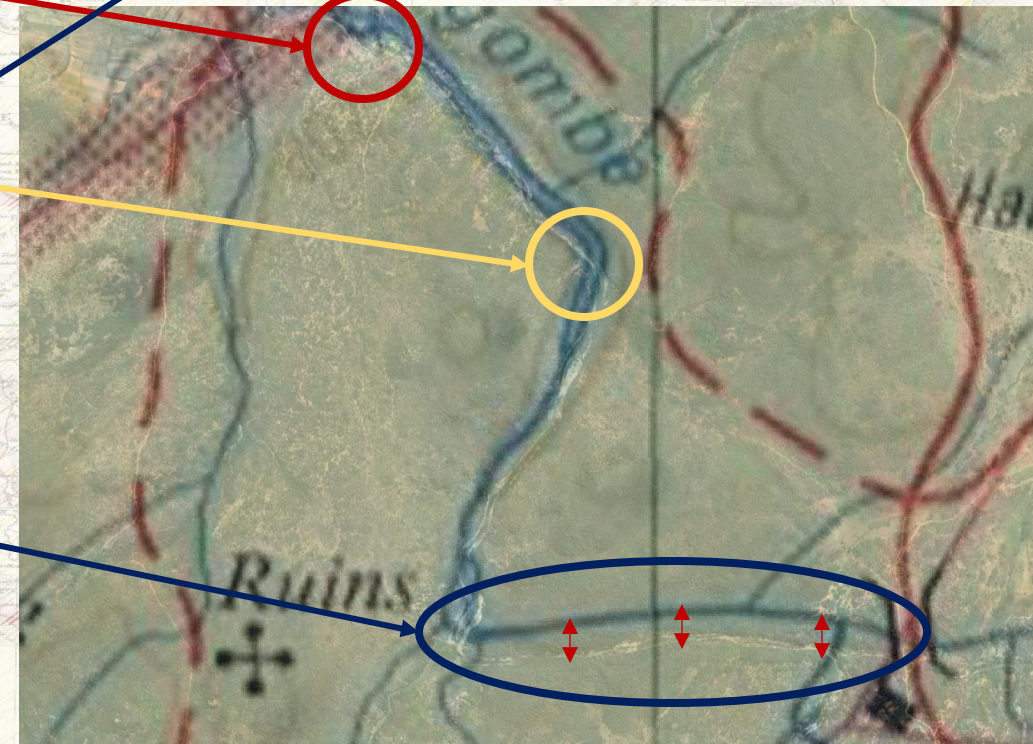
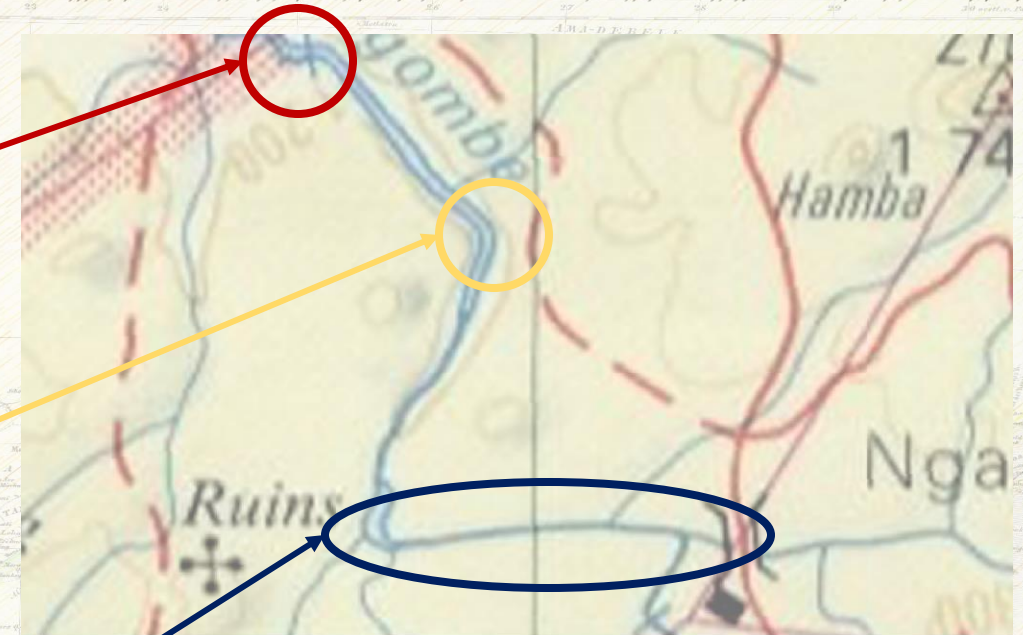
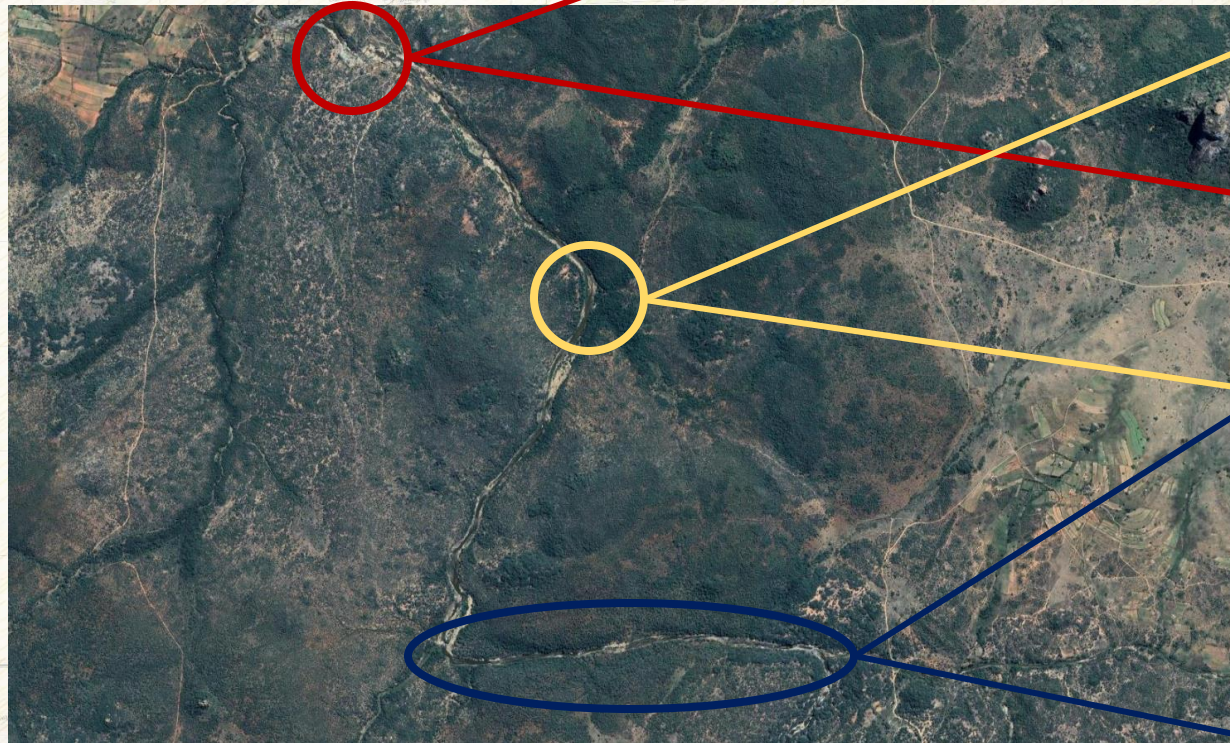
# Topographic maps: 1:50 000



<https://www.rhodesia.me.uk/maps>

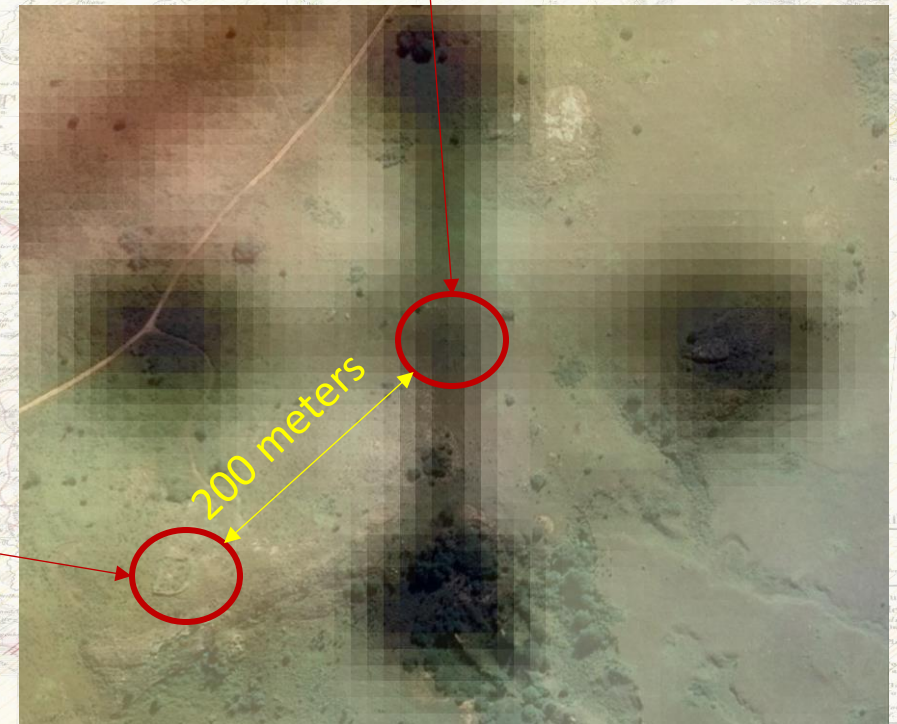
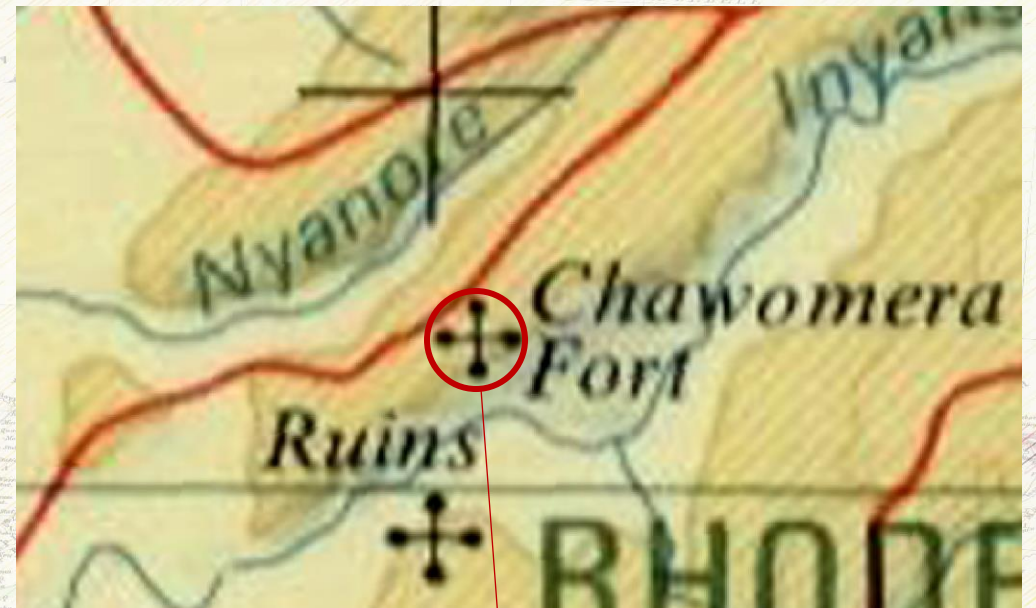
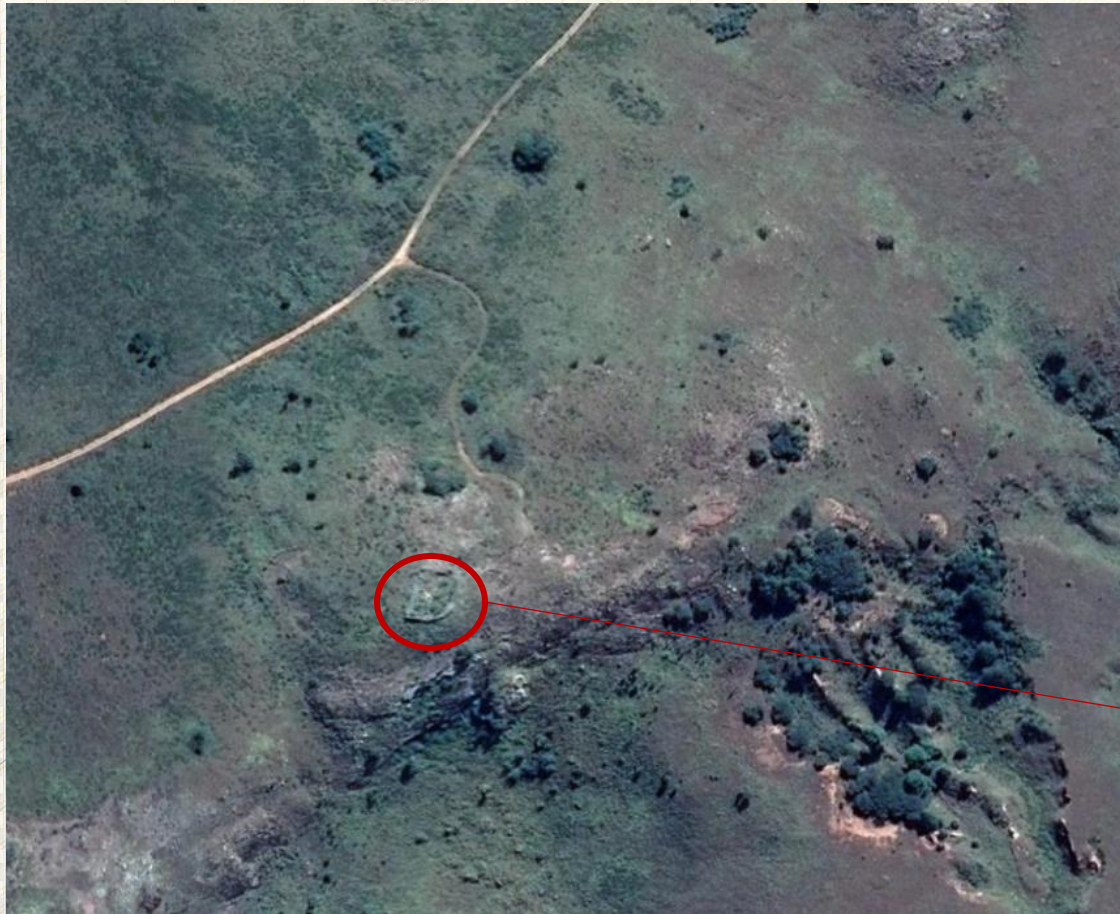


# Topographic Maps: Accuracy





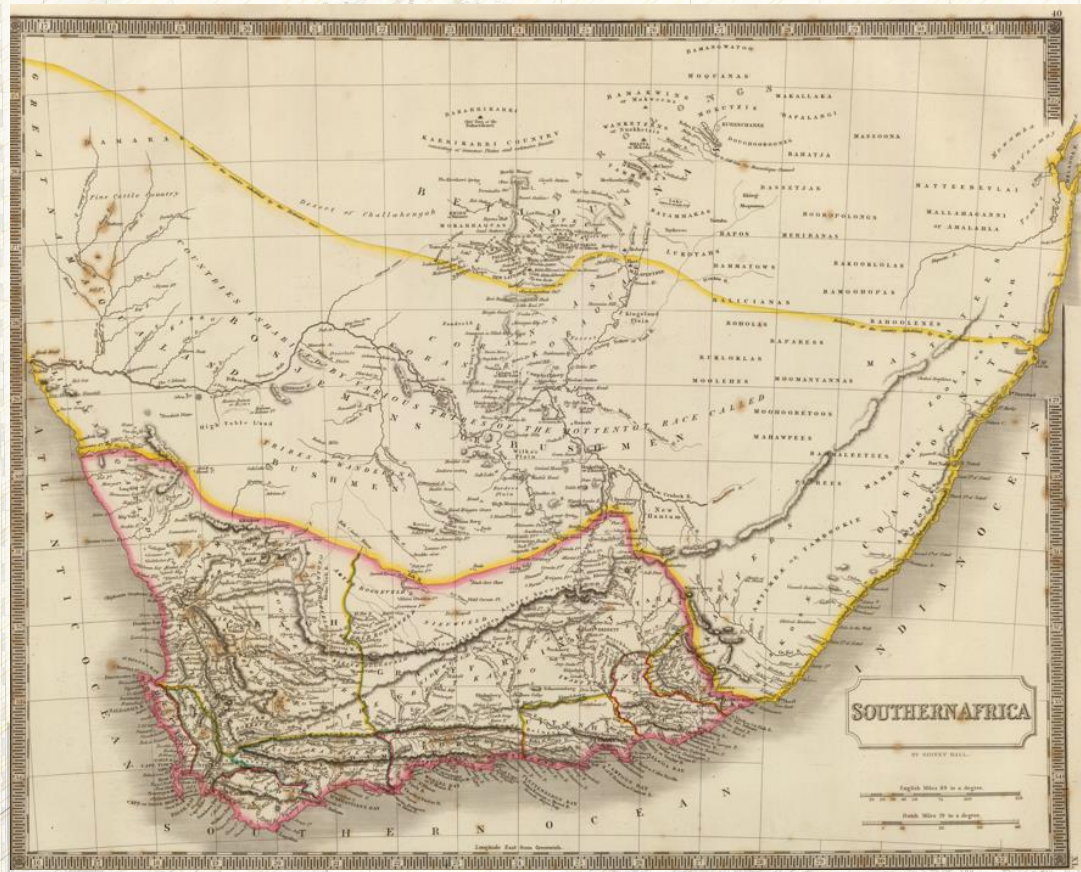
# Topographic Maps: Accuracy





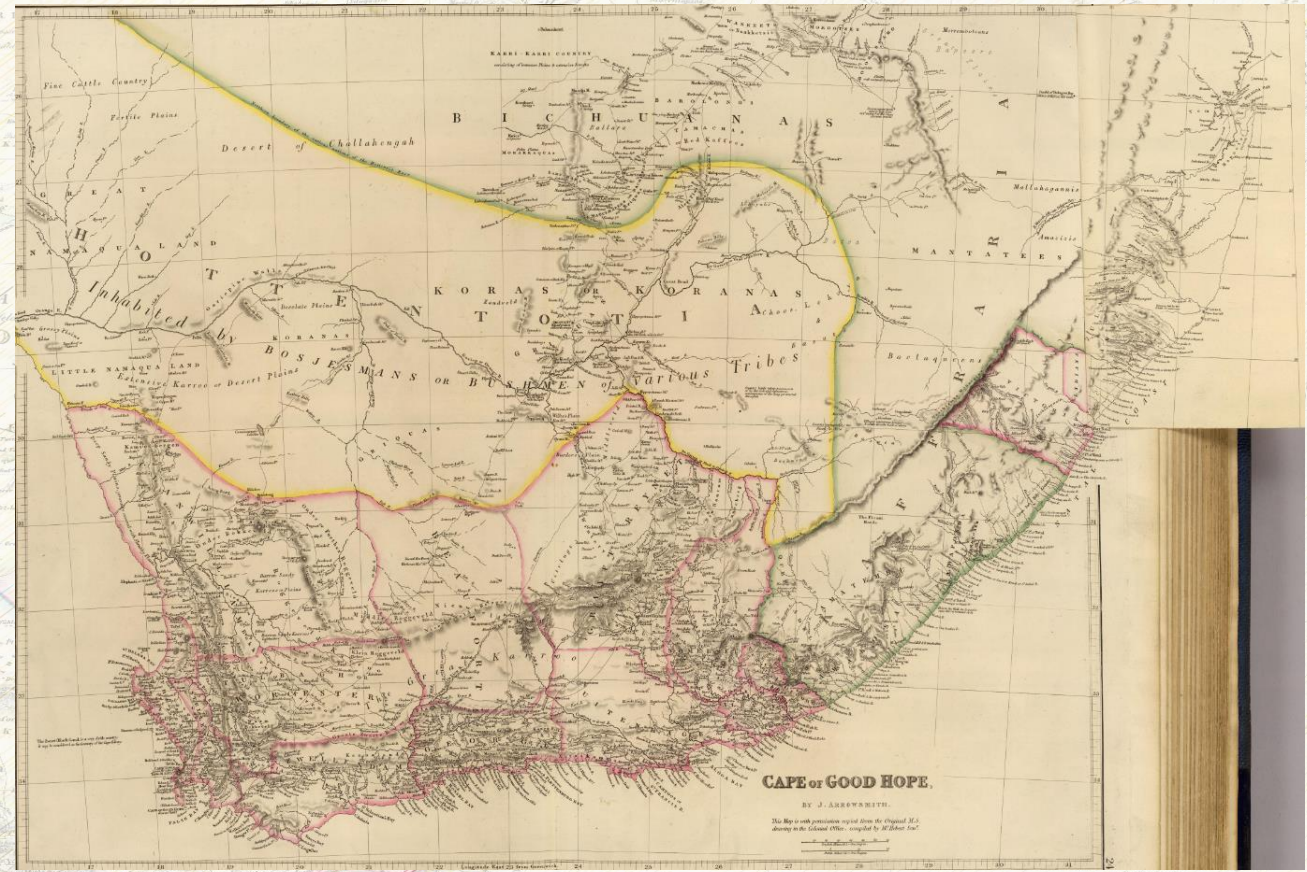
# Regional Historical Maps

1828



(David Rumsey Collection)

1836



(David Rumsey Collection)



# Regional Historical Maps: Change over time



1828



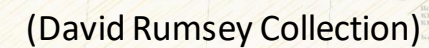
1836



1854



# 1872

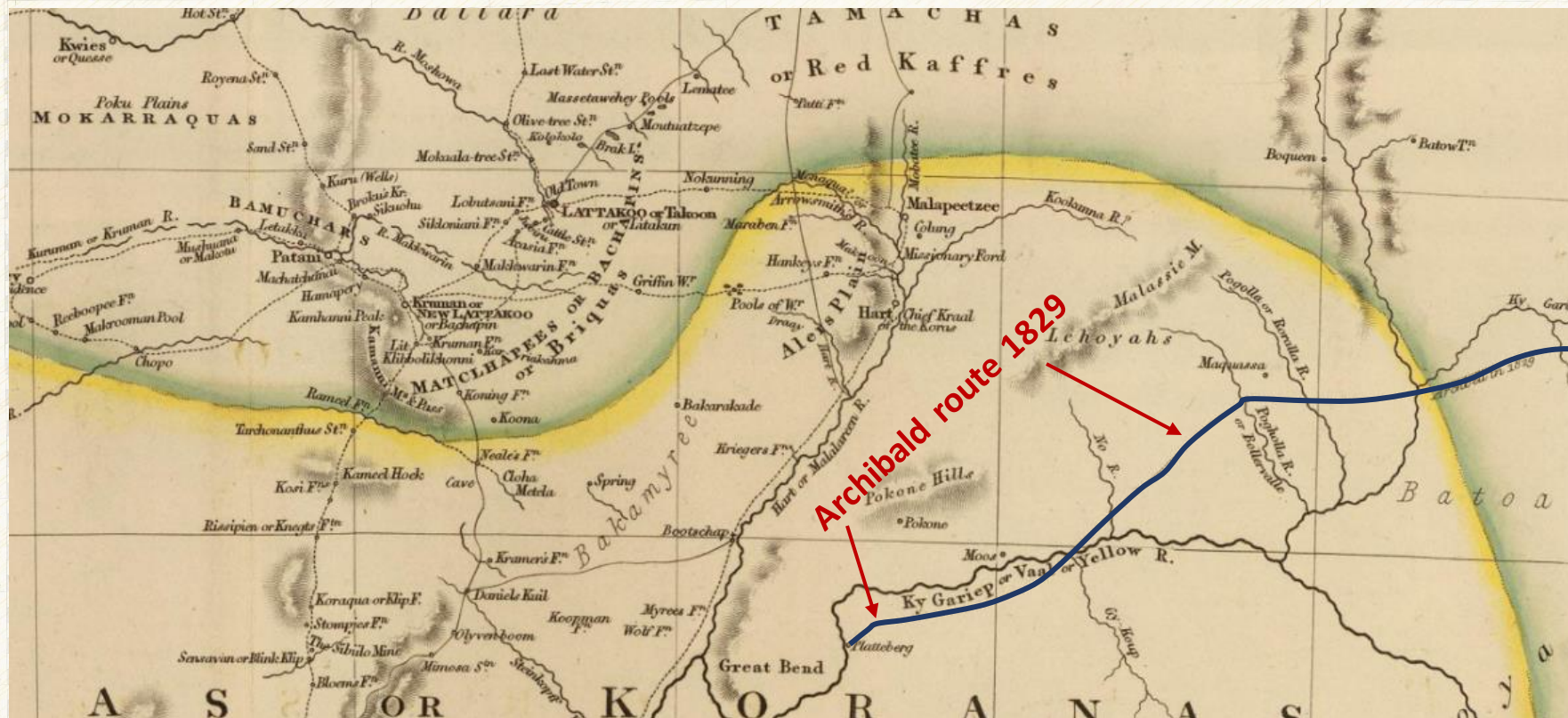




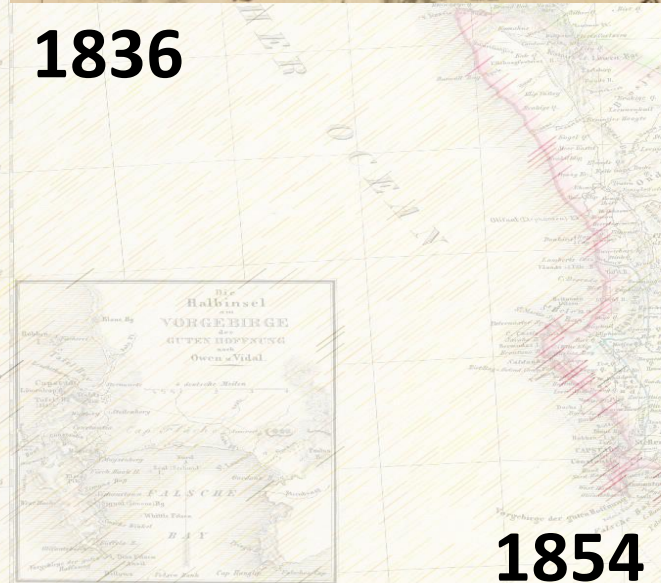




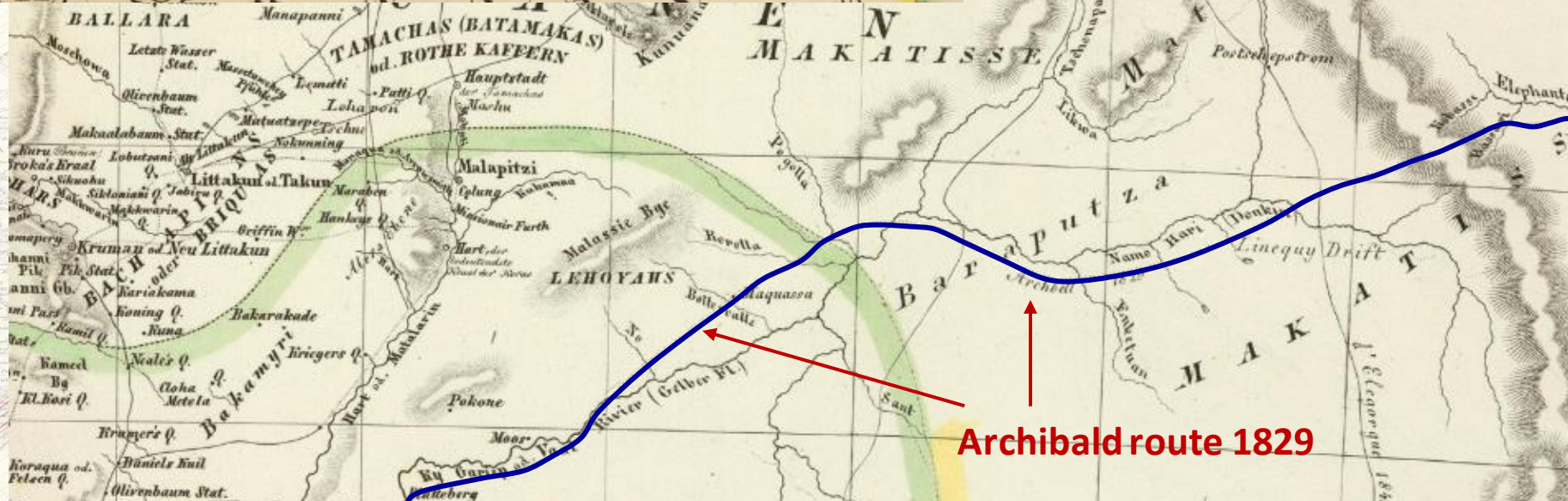
# Regional Historical Maps: Sources



1836

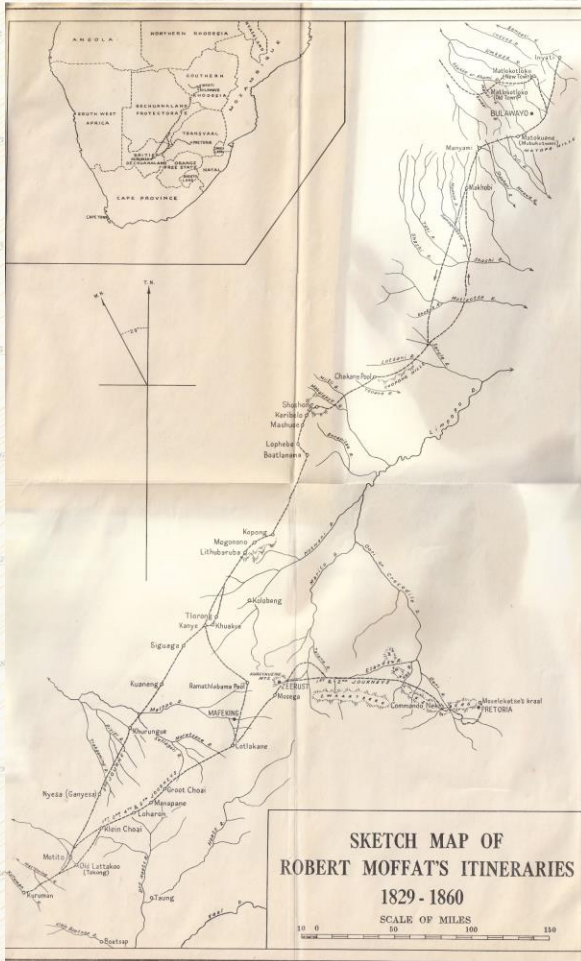


1854



Archibald route 1829





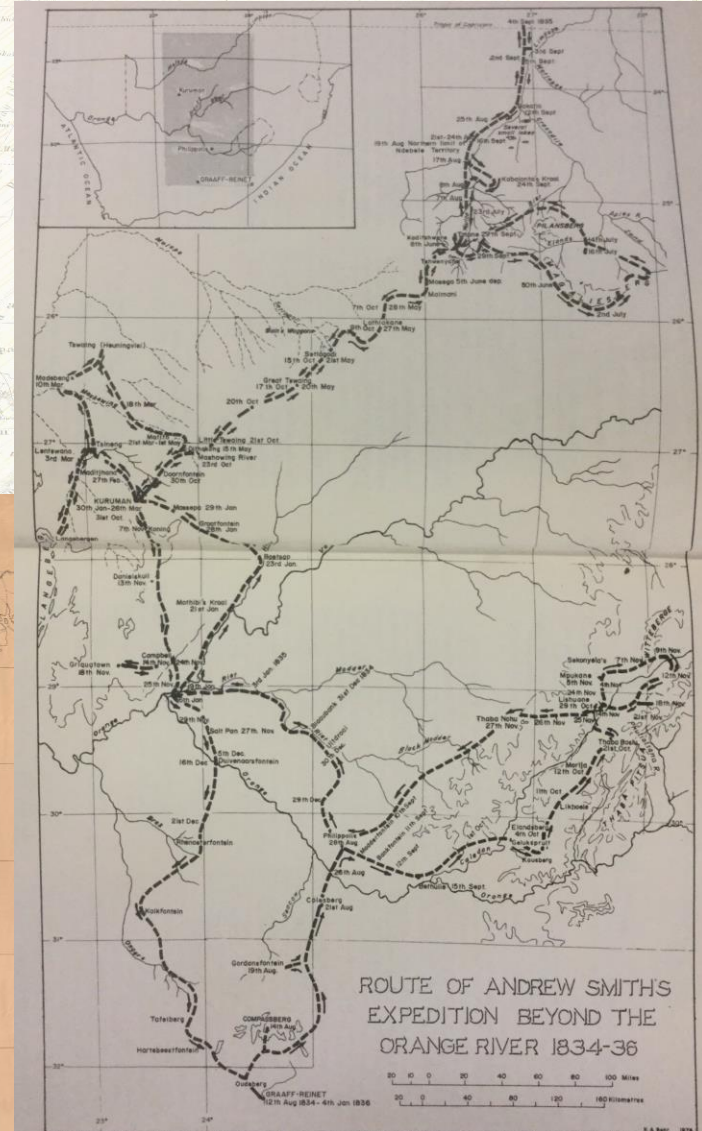
Wallis, J.P.R. ed. 1945. *The Matabele journals of Robert Moffat, 1829-1860, Vol1.* Chatto & Windus: London



Route of the South African Gold Fields Exploration Company's expedition 1869 to 1872\_Part1\_UCT Digital Archives



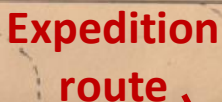
# First Hand Accounts



Kirby, P.R. 1940. *The Diary of Dr. Andrew Smith: Director of the Expedition for Exploring Central Africa, 1834-1836. Volume 1.* Van Riebeeck Society: Cape Town



Die  
SÜDSPITZE VON AFRICA



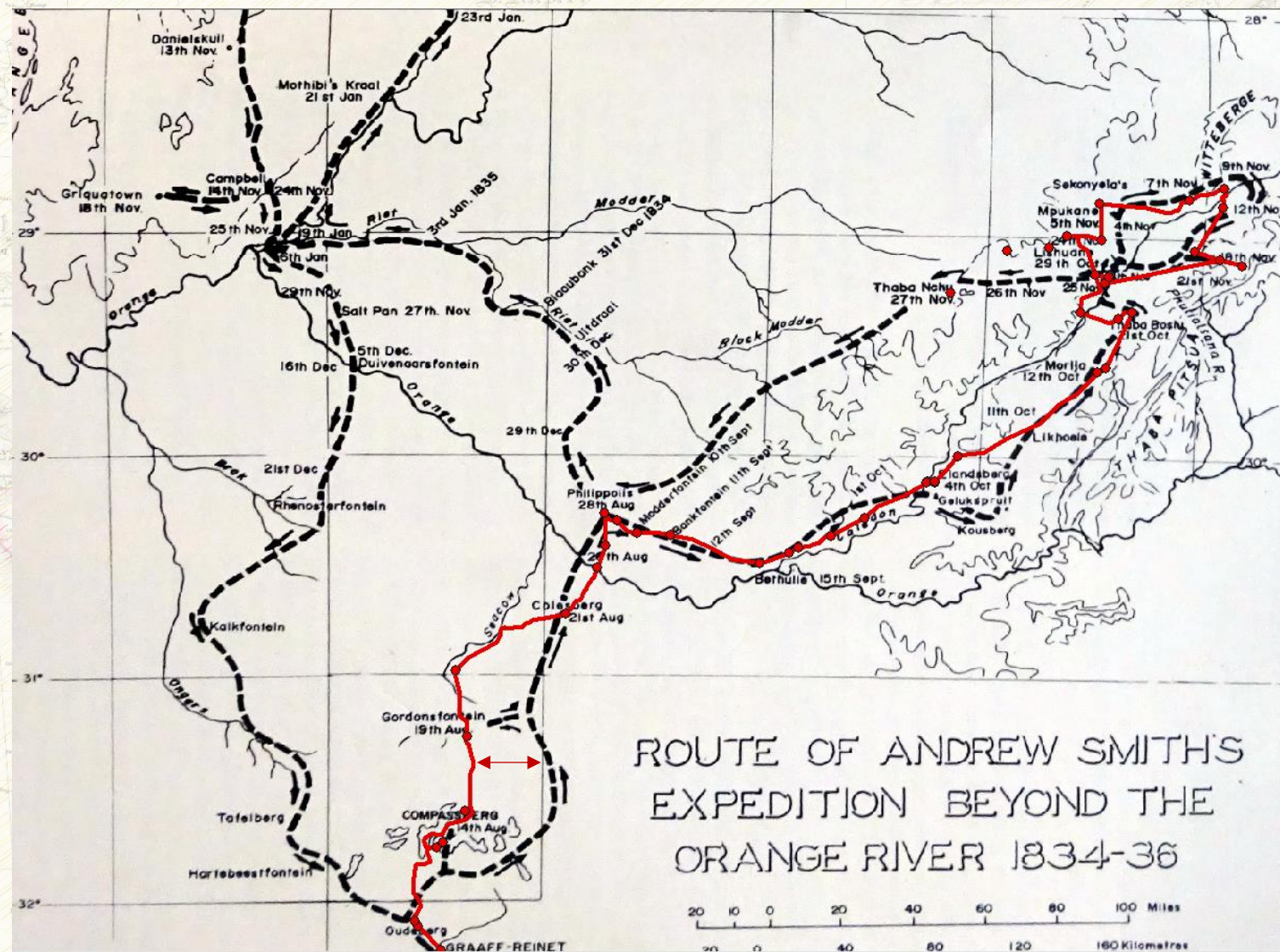
## Places visited

## Other Expeditions

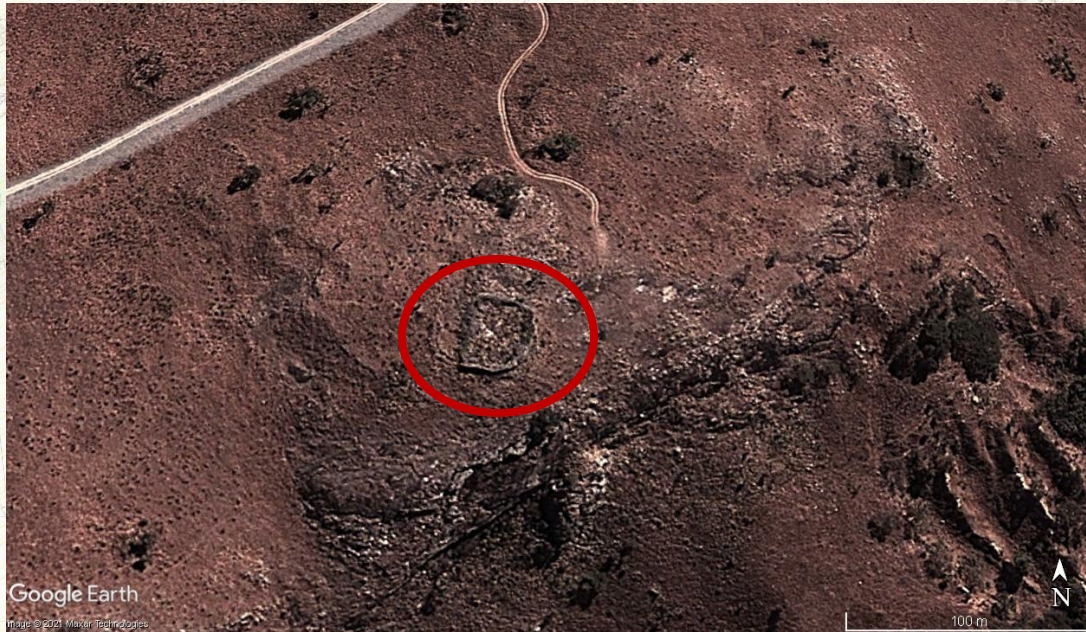
## Other Expeditions



# First Hand Accounts: Accuracies







Google Earth

Image © 2021 Maxar Technologies

Nyanga Fort

Type of site  
identified on  
historical  
maps

Rock art



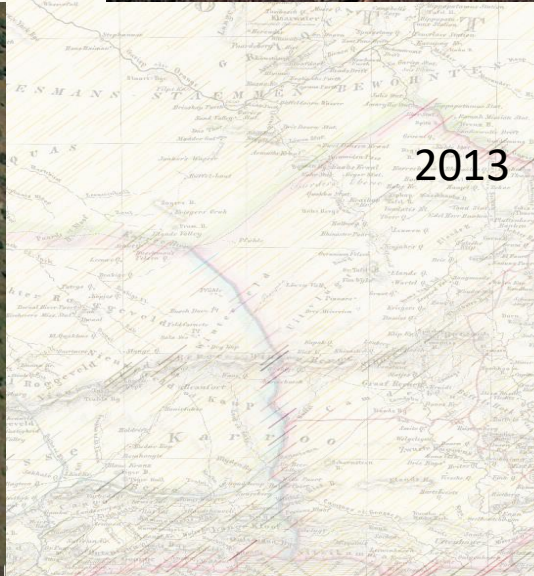
Google Earth

Image © 2021 Maxar Technologies





# Type of site identified on historical maps: Destroyed sites





# Type of site identified on historical maps

Ziwa National Monument,  
Nyanga, Zimbabwe



Pit enclosures surrounding Ziwa

Undocumented pit structures





# Thank you